

ASSEMBLY INSTRUCTIONS

WALL END ANGLE CABINET

Part	Descriptions	Qty	Part	Description	Qty	Part	Description	Qty
A	Face-frame with Door	1	E	Screw $\phi 3.5 \times 25$	3/4	I	Shelf Clip	6/9
B	Left Side Panel	1	F	L-Shaped Steel	10	J	Glue (not included)	1
C	Top And Bottom	2	G	Screw $\phi 3.5 \times 12$	20			
D	Right Side Panel	1	H	Shelf	2/3			

This instructions applies to the following items: **WECA30~WECA42**



** Wood glue are required for assembly. Wood glue applied to each notching area for stability (wood glue not included)**

STEP 1: Add a Bead of Glue to the Face Frame and each notching area needed, Slide-in the Sides, the Top and Bottom to the Frame.

STEP 2: Slide-in the Sides to the Frame.

STEP 3: Secure the Corners of the Box by using the L-Shaped Steel.

STEP 4:

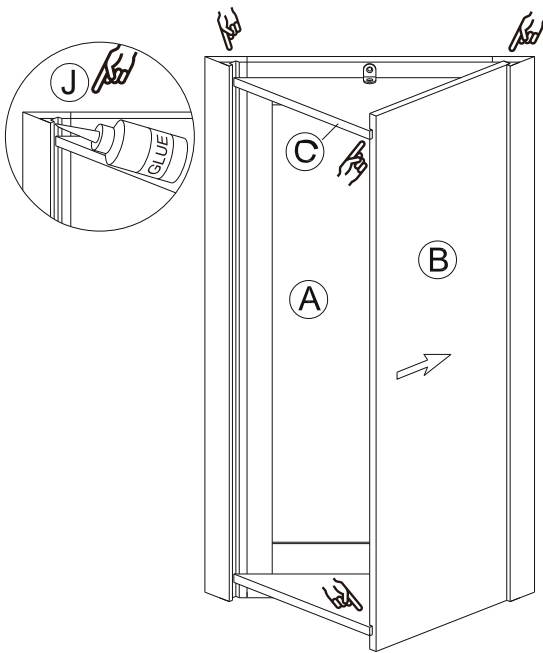


Figure1

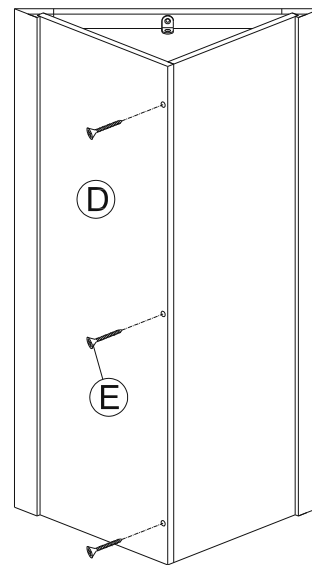


Figure2

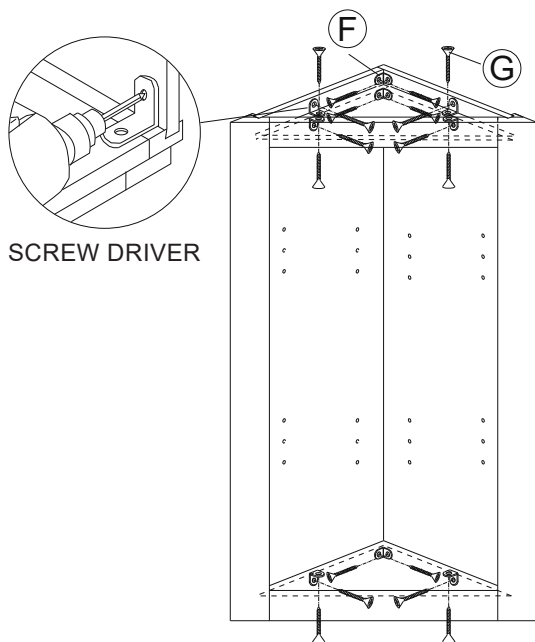


Figure3

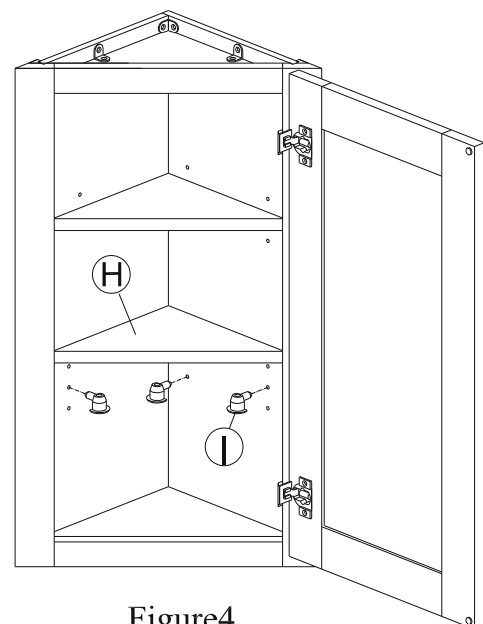


Figure4