

ASSEMBLY INSTRUCTIONS

WALL HOOD CABINET

Part	Descriptions	Qty	Part	Description	Qty	Part	Description	Qty
A	Filler	2	C	Wall Hood Box	1	E	Screw $\phi 3.5 \times 12$	24
B	Filler	2	D	L-Shaped Steel	6			

This instructions applies to the following items: **WHB36**.



** Wood glue are required for assembly. Wood glue applied to each notching area for stability (wood glue not included)**

STEP 1:

STEP 2:

STEP 3:

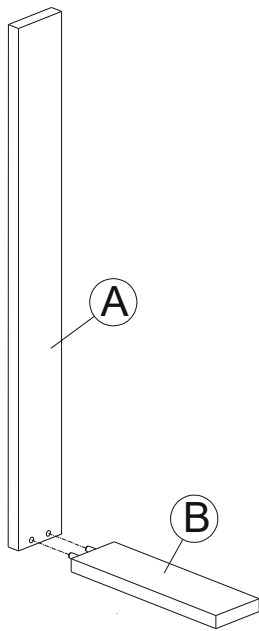


Figure1

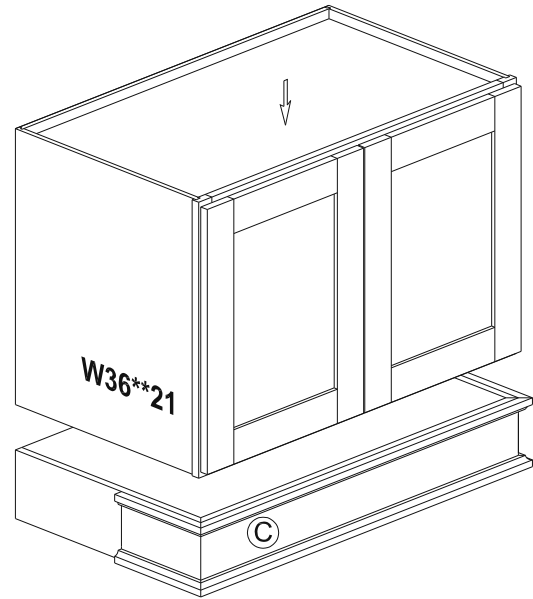


Figure2

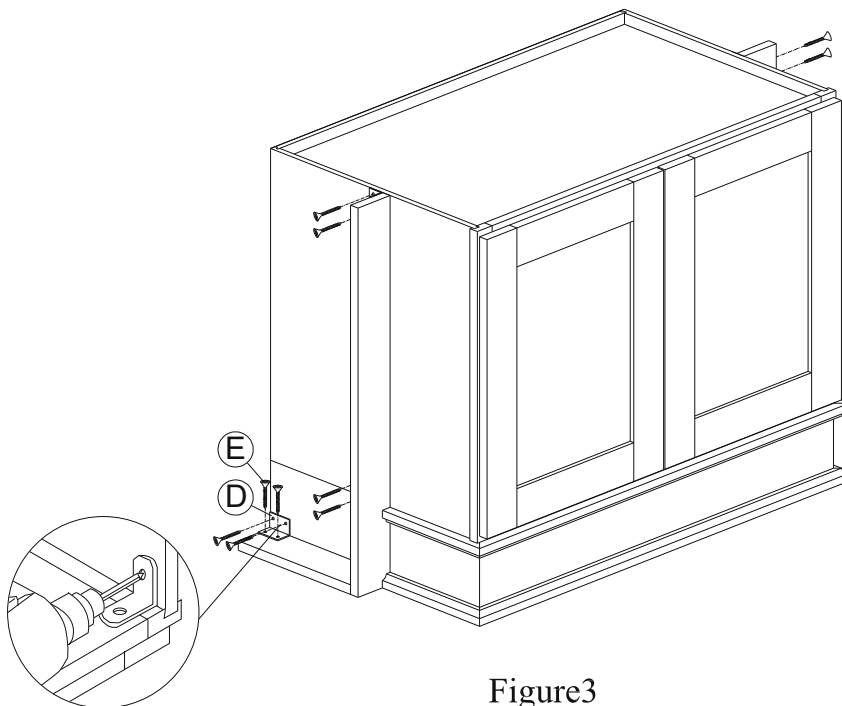


Figure3

SCREW DRIVER