

**V3621DL&DR**

ASSEMBLY INSTRUCTIONS

Getting started:

prepare a protection layer, a screwdriver

STEP 1: Joint side panel with back panel

STEP 2: Joint bottom panel with side panel

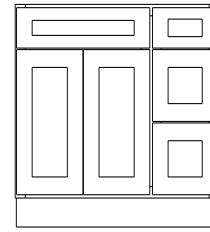
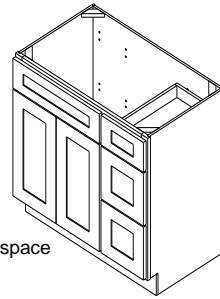
STEP 3: Joint side panel with bottom & back panel

STEP 4: Attach frame on and toekick board

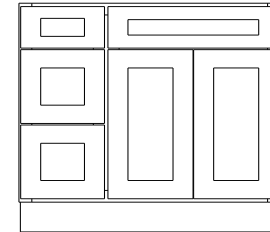
STEP 5: Joint the drawer together, then install the drawer guide.

STEP 6: Attach the plastic block on the top corner.

STEP 7: Fix drawer head on the drawer front and fix door onto the frame and adjust the cover-space




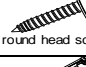
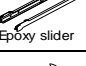



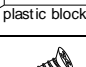
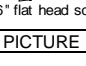


V3621DR

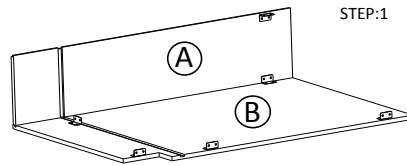


V3621DL

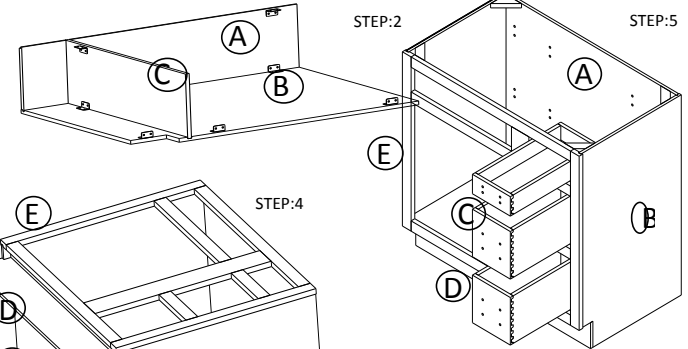
PARTS LIST		
NO.	Description	QTY
A	BACK PANEL	1
B	SIDE PANEL	2
C	TOP&BOTTOM PANEL	1
D	TOE KICK	1
E	FACE FRAME	1
F	DRAWER BOX FRONT AND BACK	6
G	DRAWER BOX SIDE	6
H	DRAWER BOX BOTTOM	3
I	CABINETS DOOR	2
J	DRAWER HEAD	4

10	1/2" HINGE	4	
9	3/4" ROUND HEAD SCREW	4	
8	BUMPER	16	
7	1" ROUND HEAD SCREW	12	
6	Epoxy Slide	3	
5	9/16" ROUND HEAD SCREW	44	
4	CLEAT	11	
3	1" FLAT HEAD SCREW FOR CARCASS	28	
2	Plastic Block	4	
1	9/16" flat head screw	38	
NO.	Description	QTY	PICTURE

HARDWARE LIST

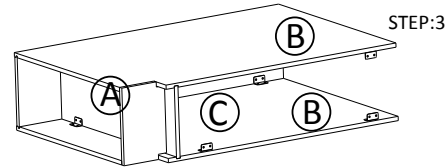


STEP:1

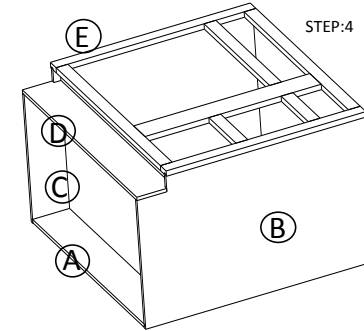


STEP:2

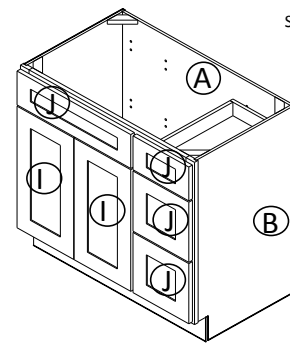
STEP:5



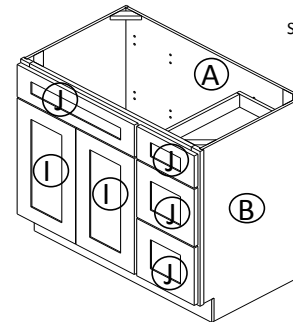
STEP:3



STEP:4

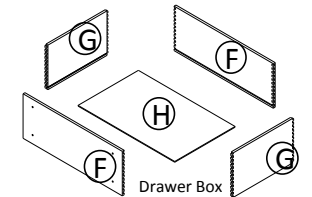
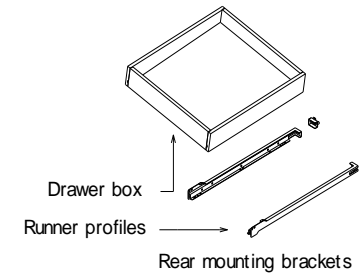


STEP:



STEP:7

Epoxy sidemount drawer runners



Drawer Box