

Vddb42, Vddb48, Vddb60  
ASSEMBLY INSTRUCTIONS

Getting started:

prepare a protection layer, a screwdriver

STEP 1: Joint side panel with back panel

STEP 2: Joint bottom panel with side panel

STEP 3: Joint side panel with bottom & back panel

STEP 4: Attach frame on and toekick board

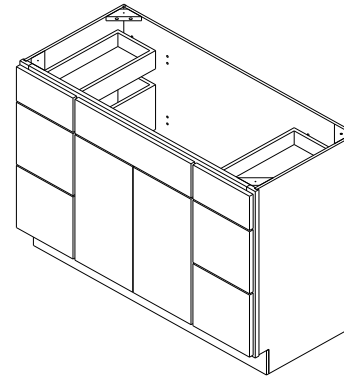
STEP 5: Attach the wood block on the top corner.

STEP 6: Joint the drawer together, then install the drawer guide.

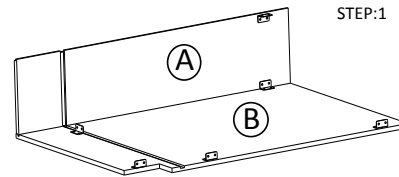
STEP 7: Fix drawer head on the drawer front and fix door onto the frame and adjust the cover-space

STEP 6: Attach the wood block on the top corner.

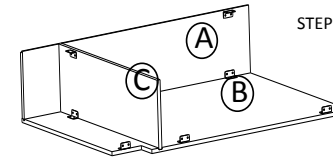
PARTS LIST		
NO.	Description	QTY
A	BACK PANEL	1
B	SIDE PANEL	2
C	TOP&BOTTOM PANEL	1
D	TOE KICK	1
E	FACE FRAME	1
F	DRAWER BOX FRONT AND BACK	12
G	DRAWER BOX SIDE	12
H	DRAWER BOX BOTTOM	6
I	DRAWER HEAD	6
J	DRAWER HEAD	1
K	CABINETS DOOR	2



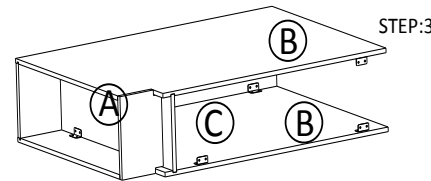
10	SOFTCLOSE HINGE	4	
9	3/4" ROUND HEAD SCREW	4	
8	BUMPER	32	
7	1" ROUND HEAD SCREW	8	
6	Selfclose slider	2	
5	9/16"ROUND HEAD SCREW	44	
4	CLEAT	11	
3	1"FLAT HEAD SCREW FOR CARCASS	5	
2	WOOD BLOCK	4	
1	1" FLAT HEAD SCREW FOR WOOD BLOCK	8	
NO.	Description	QTY	PICTURE



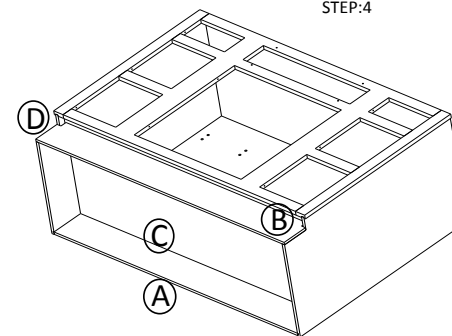
STEP:1



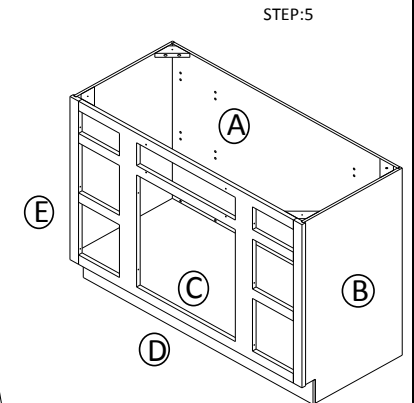
STEP:2



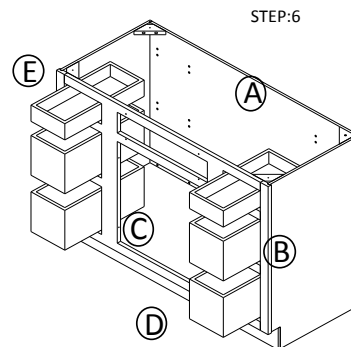
STEP:3



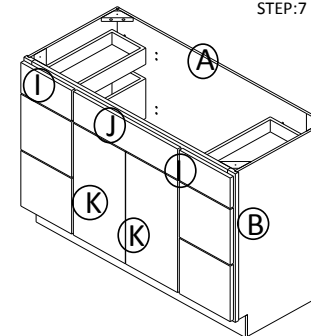
STEP:4



STEP:5

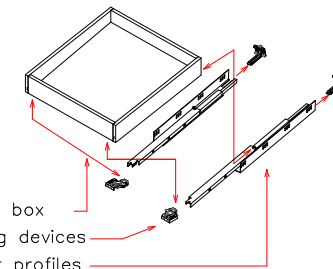


STEP:6

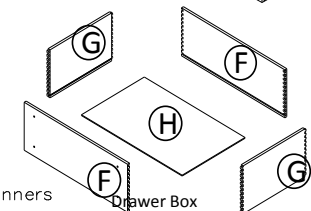


STEP:7

Full extension concealed drawer runners



Drawer box  
Locking devices  
Runner profiles  
Rear mounting brackets(for frame applications)



Drawer Box