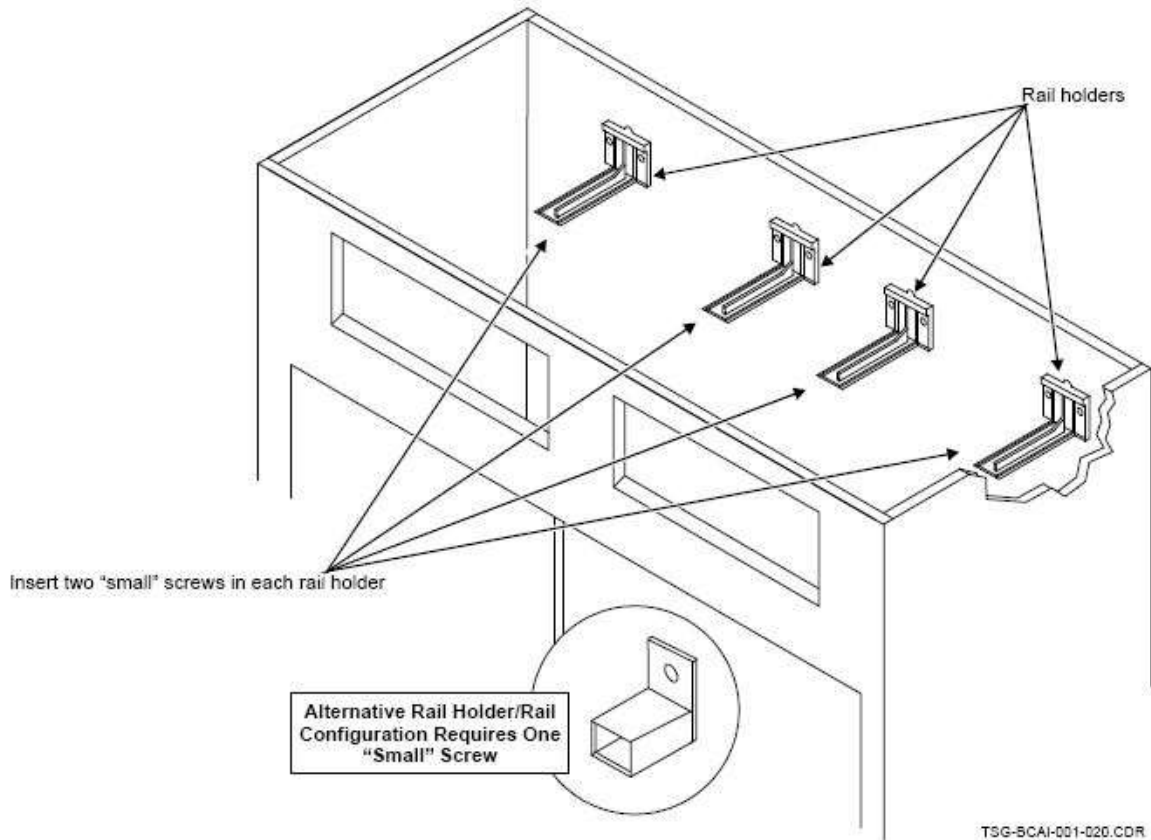
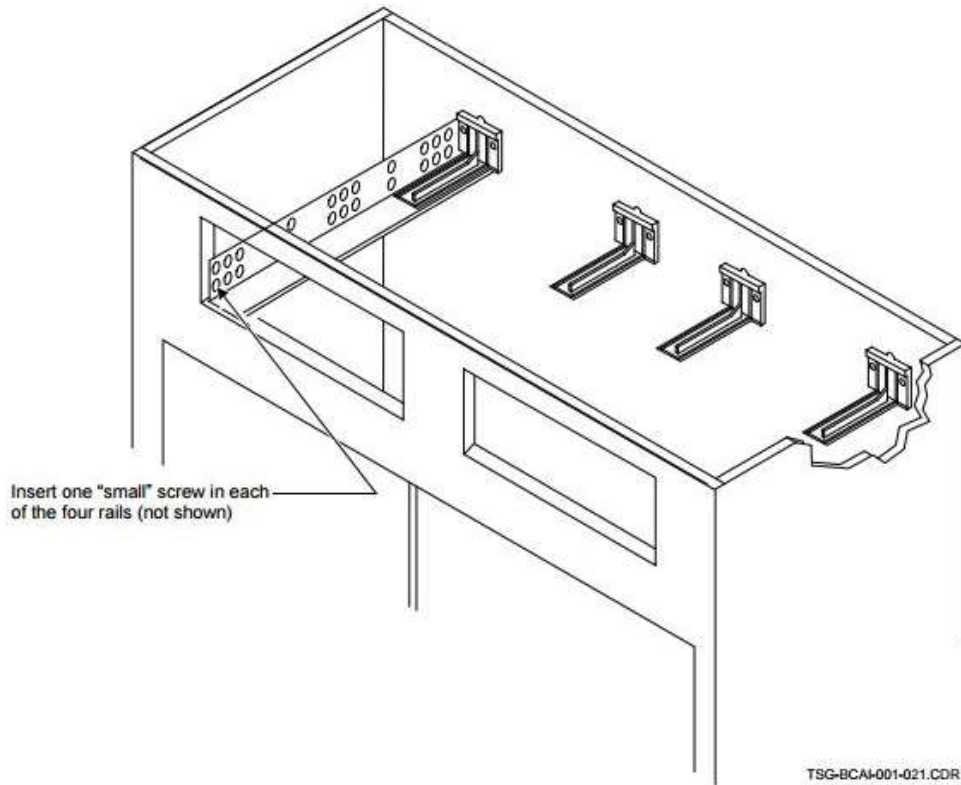


## Under Mount Soft Close Drawer Glide Assembly

**Step 1** – Once cabinet body is assembled, insert the drawer glide support brackets (rail holders) into the pilot holes at the back panel of the cabinet. If your base cabinet has the alternative drawer glide support bracket in the circle below, only one small screw will be required rather than two.



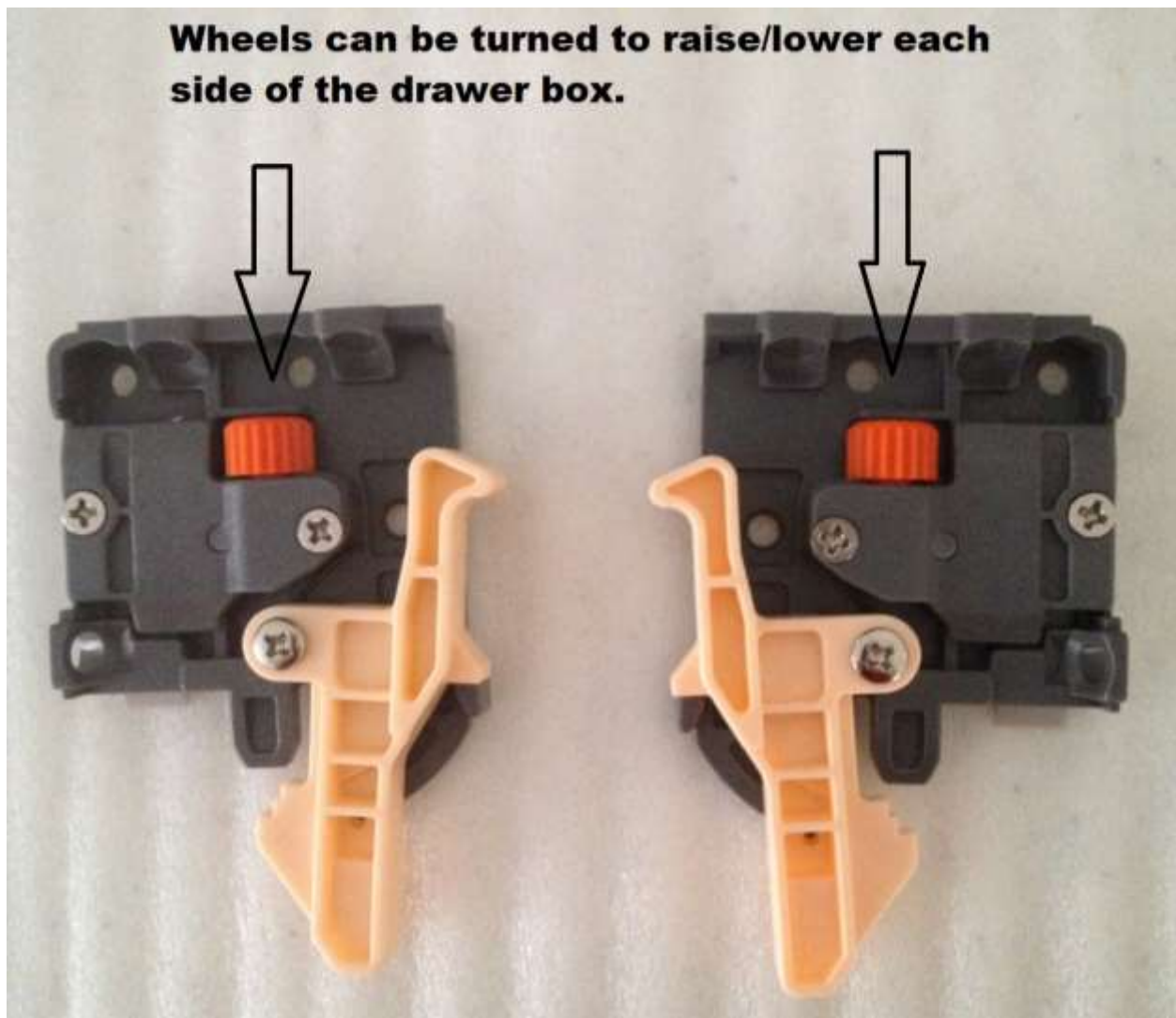
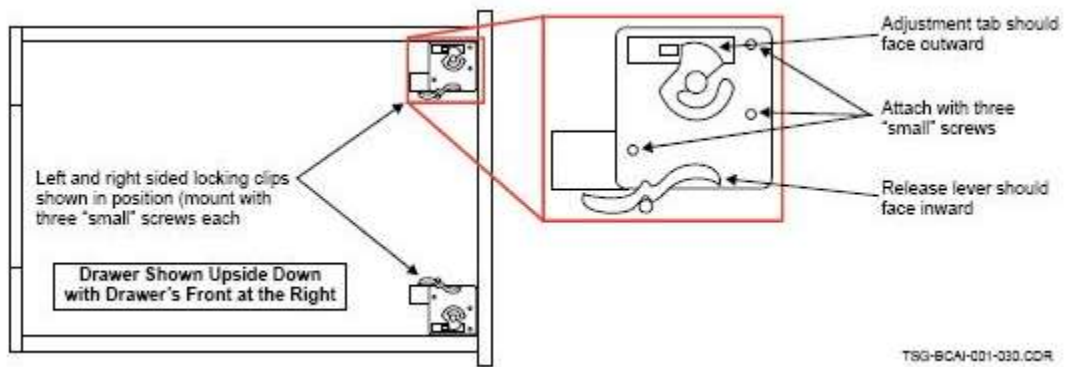
**Step 2** – Insert the metal drawer glides into the drawer glide support brackets and secure each drawer glide into the edge of the face frame.



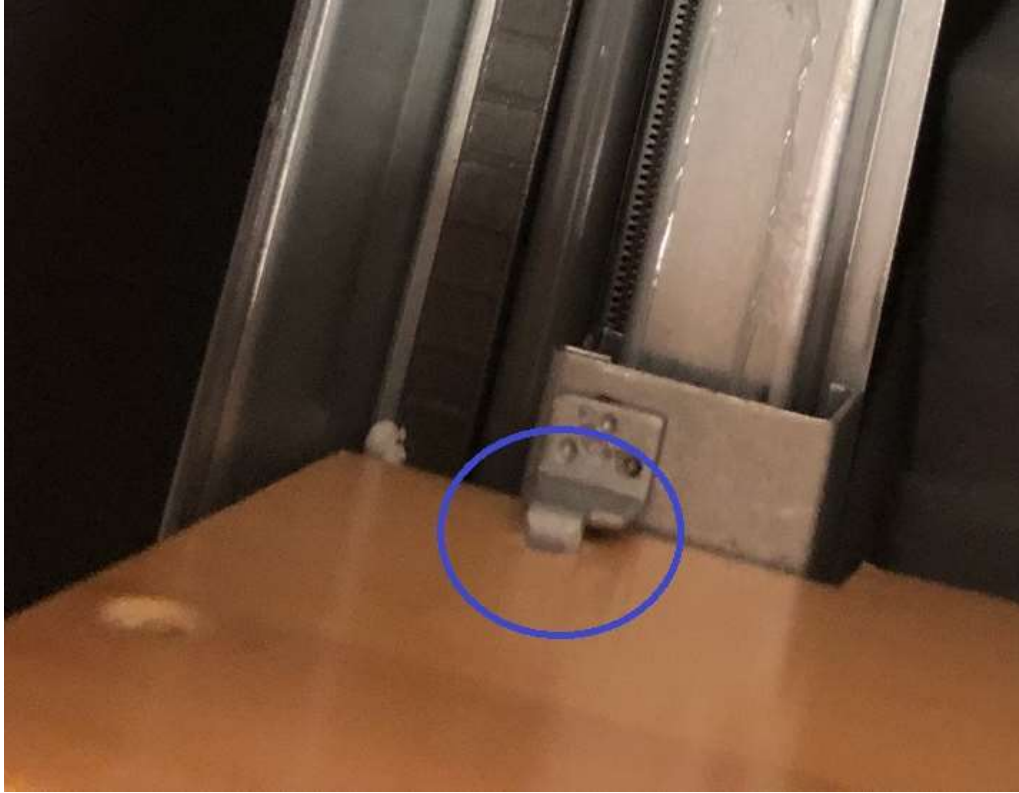
**Make sure the drawer glide support brackets are level and straight.**



**Step 3** – Attach left and right drawer locking clips to the bottom of the drawer box.



**Step 4** – Fully extend drawer glides in the cabinet to place the drawer box on top. Set drawer box down onto glides at an angle to hook the back of the drawer box into the metal point at back.



**Step 5** – Insert glides into drawer locking clips

